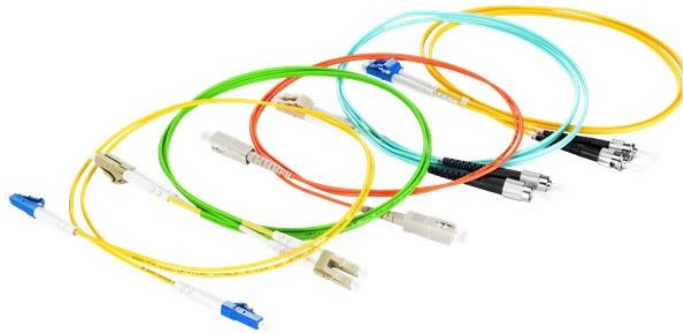


OPTICO Standard Fiber Patch Cord Datasheet

Ideal for connecting 1G/10G/40G/100G Ethernet connections.



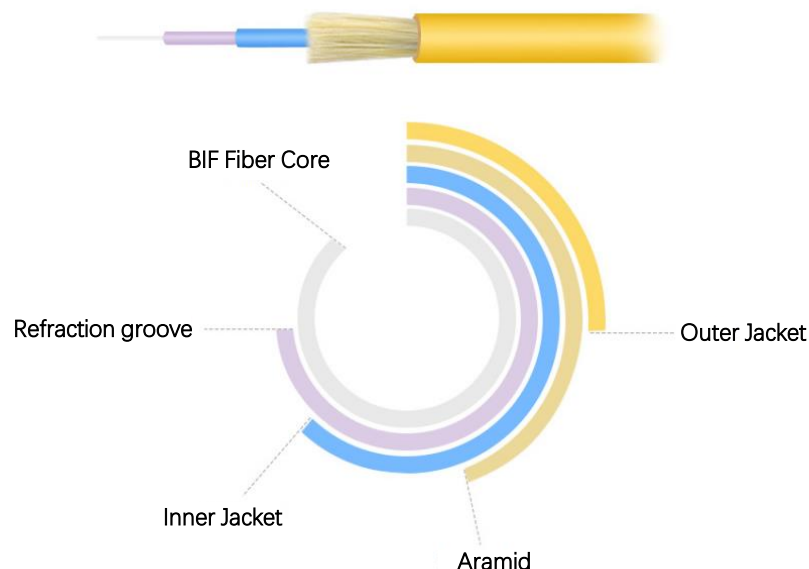
• Description

OPTICO bend insensitive fiber optic cable is less attenuation when bent or twisted compared with traditional optical fiber cables and this will make the installation and maintenance of the fiber optic cables more efficient. We are always obsessed with the selection and use of high-quality materials. OPTICO fiber optic cable is ideal for network cabinet cabling, ceiling channel cabling, and floor cabling in data centers.

• Features

- High quality CCTC ceramic ferrules
- Good repeatability and interchangeability
- Perfect solution for installs that require
- CE/CPR/ISO/ROHS ✓
- 100% 3D tested/Temperature tested/Loss tested before delivery
- High and low temperature cycle test
- Stable data interchangeability
- Long mating cycles

• Cable structure



- Technical Specifications

Item	Parameter
Fiber Cable Type	Simplex/Duplex
Fiber Mode	Single-mode/Multi-mode
Ceramic Ferrule	Zirconia Ceramic
Connector A	LC/SC/FC/ST/MU/MTRJ/E2000/Customized
Connector B	LC/SC/FC/ST/MU/MTRJ/E2000/Customized
Polish Type	APC/UPC/PC
Cable Jacket	PVC/LSZH
Jacket Color	As customized
Outer Cable Diameter(mm)	0.9/1.2/2.0/3.0
Minimum Bending Radius	10D/20D(Static/Dynamic)

Optical Testing	Parameter
Insertion Loss(dB)	<0.25
Return Loss(dB)	≥55UPC
Wavelength(nm)	1310/1550(Single-mode);850/1300(Multi-mode)
Tensile Strength(N)	2.0mm:60(Long Term)/100(Short Term);3.0mm:180N(Long Term)/500N(Short Term)
Operating Temperature(°C)	-40~85
Storage Temperature(°C)	-20~70

- Tips:

Due to the COVID-19, sorry that you and our team couldn't visit face to face with each other. In order to make the customers know us more, please visit our VR factory, it is just like you were really standing in our factory.

OPTICO Fiber Assemblies Production Line VR :<https://www.linked-reality.com/company/15555/en>

• Optical Specifications

Optical Testing	Parameter
Insertion Loss(dB)	<0.25
Return Loss(dB)	SMF:UPC≥55,APC≥60 (LC/SC/ST/FC/MU/MTRJ, UPC≥55, APC≥85(SM E2000) ; MMF:UPC≥ (LC/SC/ST/FC/MU),UPC≥35 (MTRJ)
Wavelength(nm)	1310/1550(Single-mode);850/1300(Multi-mode)
Tensile Strength(N)	2.0mm:60(Long Term)/100(Short Term);3.0mm:180N(Long Term)/500N(Short Term)
Vibration(dB)	≤0.2
Interchangeability(dB)	≤0.2
Operating Temperature(°C)	-40~85
Storage Temperature(°C)	-20~70

• Ordering informations:

Connector	Polishing Type	Color	Fiber Type	Cable Diameter	Cable Type	Tube Type
1=SC	PC	1=Yellow	1=G652D	1=Bare fiber	1=Simplex	1=PVC
2=LC	UPC	2=Orange	2=G657A1	2=0.9um	2=Duplex	2=LSZH
3=FC	APC	3=Aqua	3=G657A2	3=1.2mm	3=Branch	3=OFNR
4=ST		4=Pink	4=G657B3	4=2.8mm	4=Ribbon	4=CPR
5=MU		5=Purple	5=OM1	5=3.0mm	5=Fan-out	
6=E2000		6=Red	6=OM2	6=4.0mm		
7=MTRJ		7=White	7=OM3	7=Custom		
8=Custom		8=Brown	8=OM4			
		9=Blue	9=OM5			
		10=Black				
		11=Custom				